

MeshProvision Server

Overview

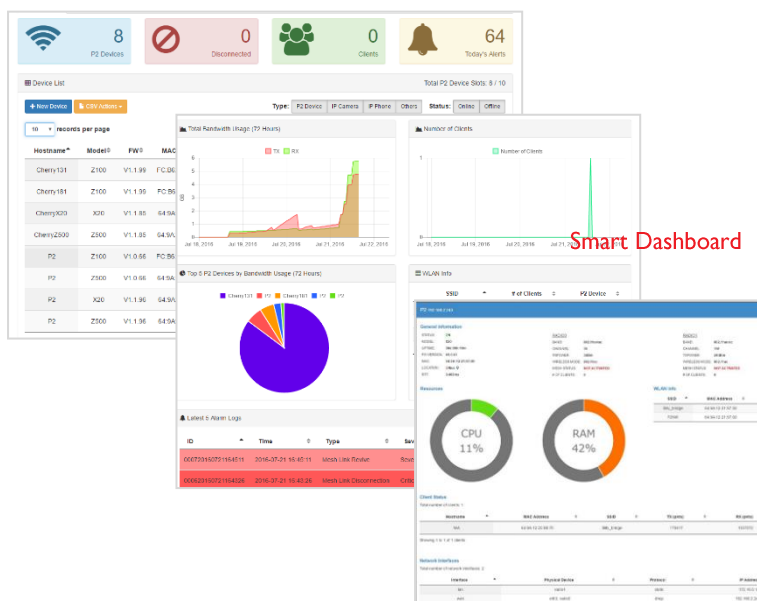
The MeshProvision Server is a web-based centralized network provisioning and management software specially designed for AN wireless network. It provides a general overview of AN devices and the network through well-formatted, organized and analytical client and device data showcase.

Conveniently provisions and configures all the AN devices in the network through the efficient group-based configuration feature. Broadcast configuration to multiple devices in one go for centralized management of large scale network deployments.

All AN devices are organized in groups for easy management of networks of any size. Locate every AN device on your customized maps. Visualize the mesh connection status of different mesh backbone radios through the SmartMesh monitoring page that presents a graphical view of mesh link health at a glance. Access AN device information summary through the Smart Dashboard.

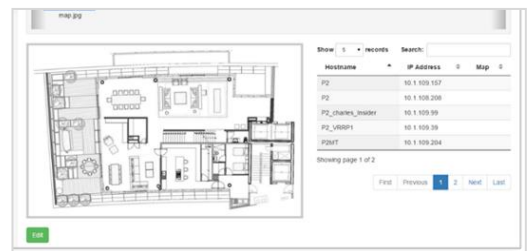
The traffic monitoring feature provides real-time network insight on a per-user or per-device basis, assisting network administrators in achieving better network management by optimizing both the end-user experience and network security.

Group-based management



Smart Dashboard

Site map supported



Highlights

- Centralized system monitoring
- Integrated network management
- Real-time visual traffic analysis
- SmartMesh monitoring on mesh link status and client traffic
- Group-based management
- Smart Dashboard showing data per AN device
- Network mapping
- Customizable logging and reporting system

Product Supported

- Z100
- Z500
- X20 MeshRanger
- X30 MeshRanger Series
- Other AN Devices

MeshProvision Server

Specifications

| Product Name | MeshProvision Server Standard | MeshProvision Server Basic |
|--|---|---|
| Recommended Minimum Hardware Platform# (Provided by Customer) | Intel i7 PC, 32/64-bit CPU, 3GB RAM, Hardware RAID 1TB HDD | Intel i5 PC, 32/64-bit CPU, 3GB RAM, 500GB HDD |
| Operating System | Linux Ubuntu (Included in MeshProvision Server Software Package) or VMware Player on Windows (OS Provided by Customer) | |
| Centralized SmartMesh Network Monitoring | Yes | Yes |
| Initial Number of AN Devices Supported (Expandable in Steps of 10 or 100 AN Devices, Hardware Dependent) | 500 | 100 |
| Fault Management | <ul style="list-style-type: none">▪ 3rd-Party Device Monitoring (Camera, Router, SC and AC etc.)▪ Alarm Log and Email Alert Reporting | |
| Configuration Management | <ul style="list-style-type: none">▪ AN Device Firmware Upgrade▪ MeshProvision Server Software Upgrade | |
| Administration Management | <ul style="list-style-type: none">▪ User Account Management▪ Graphical Location-Based Monitoring▪ Maximum Client per SSID▪ Resources Info Monitoring (CPU Usage, RAM Usage)▪ Group-Based Home Page (Device List, Total Bandwidth Usage, Top 5 Devices by Bandwidth, WLAN Info, Latest 5 Alarm Logs)▪ Per Device Smart Dashboard (AN Device Information, Resources, WLAN Info, Client Status, Network Interface, Latest 5 Alarm Logs)▪ SmartMesh Monitoring▪ System Event Log and Reporting | |
| Performance Management | <ul style="list-style-type: none">▪ Traffic Monitoring (Per User/ AN Device)▪ Statistics Report: SSID/Group (Resources, Client Status, Throughput and Alarm etc.) | |
| Security Management | <ul style="list-style-type: none">▪ Hybrid PSK2 / User Name Password▪ RADIUS Authentication (Local/ Proxy)▪ Secured Remote Command Authentication | |
| # Customer may need to upgrade the server as the number of AN Devices or site beyond the initial capacity. | | |

Anywhere Networks reserves the rights to change, modify, transfer or otherwise revise the publication and the product specification without notice. All scaling metrics outlined in this document are maximum supported values. The scale may vary depending on the deployment scenario and features enabled.

Visit www.anywherenetworks.com or contact sales@anywherenetworks.com for more details.