

# Connecting Workplace

## Creating Smart Space

### Future of Workplace

The increasing adoption of Internet-of-Things (IoT), video analytics, and other emerging technologies in business applications and services, create smarter workplaces in business campuses, construction sites, ports, and more. **Anywhere Networks** connects digital technologies rapidly and in a more cost-efficient way for better ways to do business. **Smart Wireless Mesh Network** is the very foundation in creating a **Safer and Smarter Workplace**.

- **Connect** workforce, workplace, workspace, applications for **sustainable business**
- **Enable Automation** and technological innovation for **operational excellence**
- **Create Experience** of the Connected Business, Smart Workspace Anytime **Anywhere**

## The **Connected** Things of Future Workplace

### **Workspace Connectivity**

A **Wireless Mesh Network** is capable of connecting office and campus buildings, business parks, and industrial complexes, but can also connect complete cities and provinces. Deploying a wireless network infrastructure in all those areas, is simple, taking days instead of months, and supports even the most demanding of applications and needs.

### **Vehicles to Stay Connected for Business Automation**

The increasing use of autonomous and unmanned vehicles, cranes, drones, robots, trucks, and trains, in smart factories and ports, increases productivity and operational efficiency as well as reducing downtime, operating and maintenance costs. Both for monitoring and control purposes these vehicles, cranes and robots, need to be connected. These customers use **Anywhere Networks'** Smart Wireless Mesh network for connectivity as it is the most flexible, easiest to install and manage alternative offering robust connectivity for mission-critical applications.

## **We Connect Everything**

### **IoT Connectivity for Smarter Workspace and Smarter World**

Connect and process IoT-based data such as HVAC, lighting, temperature, noise, air quality, energy in worksite premise as well as the processing data in business applications, we make smart wearable devices to the smart factory, smart automation to smart port, smart building to smart campus in the connected IoT applications, the data-driven insight help maximize the workspace design for Smarter Workspace, hyper-connected Smarter world.

## **We Enable Automation**

## **Connected Video Analytics for Intelligent World**

Deep learning and AI-based video analytics systems play a vital role in social distance measuring, mask detection, crowd control and traffic monitoring, biometrics, violence recognition and perimeter protection, to mention a few. These emerging technologies are used to safeguard campuses, business parks, industrial infrastructure and cities. In order to support the regulatory activities of authorities and businesses in the midst of continuing economic constraints, the connected intelligent video analytics helps maintain public health, safety and security. Where video sources and analytics systems need robust connectivity, the flexibility of providing connectivity anywhere makes a **Smart Wireless Mesh** network the natural choice.

## **Connected Video Surveillance for Secured Workplace and Safer World**

Video surveillance systems to secure our workplaces can contain hundreds of high-definition network cameras for continuous storage, live view and camera control. This requires a robust network infrastructure capable of handling a huge bandwidth but also low latency. A smart wireless mesh network meets these highest of demands, connects all cameras in one, fully encrypted wireless network. While saving up to 80% of the installation time at half of the cost, it is also the most flexible solution for demanding connectivity.

## **Authentication, Authorization and Access Control for 24/7 Operation**

Connectivity without trenching through building facilities like the parking, for speedy and cost-saving deployment, incorporates multi-factor authentication data such as fingerprints, face recognition, license plate recognition with access control and identity authentication systems, for uninterrupted 24/7 security operations.

## **We Create Experience**

### **Flexible, Collaborative and Connected Workspace**



**Business Park**



**Campus**



**Industrial Complex**



**Construction**

## Anywhere Networks **Connectivity Solution**

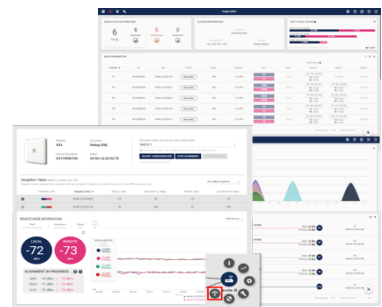
### Network Node (A-NN)

- Gigabit Throughput
- 2 x 5GHz or 3 x 5GHz radios
- POE in and POE out
- IP67 Rated and 6 kV Surge Protection
- Internal/External Antenna Port
- Full Mesh Functionality
- Cost-efficient



### Node Manager (A-NM)

- Node Management Software Tool
- Intuitive and Ease to Use Design
- Cluster Management
- Mobility Configuration
- Antenna Alignment



## The **Connected** Smart Spaces

Anywhere Networks' **Smart Wireless Mesh** supports changes in working styles allow the workforce to stay connected in distributed and virtualized workspace infrastructure.

**We Connect Everything. We Enable Automation. We Create Experience.**

In times of global and regional lockdown (i.e. the situation of Covid-19) and the transitional period of business recovery, **Wireless Mesh Network** serves as a building block of rapid network architecture deployment to carry on business and services required, to keep people safe and productive, automate everyday operations, **Interconnect Workplaces and Workspace** for **Creating Smart Space**.

**High-Capacity Throughput. Security. Redundancy. Flexible Topology. Rapid Deployment.**